

# Test Report

No. SZARR180323033-01

Date: Apr. 03, 2018

Page 1 of 33

**Applicant** : Fuzhou AOK LED Light Company Limited

**Address** : Floor 3 Building 23, No. 152 GUANPU RD Cangshan District Fuzhou, FUJIAN  
350008 CHINA

**The submitted sample and sample information was/were submitted and identified by/on the behalf of the client**

**Sample name** : parking lights

**Model No.** : AOK-115WoT-NV-XX-XX-XXXX-BN-P(main test),  
AOK-75WoT-NV-XX-XX-XXXX-BN-P, AOK-145WoT-NV-XX-XX-XXXX- BN-P,  
AOK-180WoT-NV-XX-XX-XXXX- BN-P, AOK-200WoT-NV-XX-XX-XXXX- BN-P,  
AOK-230WoT-NV-XX-XX-XXXX- BN-P

**Sample received date** : Mar. 23, 2018

**Testing period** : Mar. 23, 2018 to Apr. 03, 2018

**Test requested** : 1. As specified by client, to screen Lead(Pb), Cadmium(Cd), Mercury(Hg), Chromium(Cr) and Bromine(Br) in the submitted sample(s) by XRF.  
2. As specified by client, when screening results exceed the XRF screening limit in IEC 62321-3-1:2013, further use of chemical methods are required to test the Lead(Pb), Cadmium(Cd), Mercury(Hg), Hexavalent Chromium(Cr(VI)), Polybrominated Biphenyls(PBBs), Polybrominated Diphenyl Ethers(PBDEs) in the submitted samples in accordance with the RoHS Directive 2011/65/EU.

**Test Method:** Please refer to the following page(s).

**Test Result(s):** Please refer to the following page(s).




Tested by Willow Liu  
Willow Liu  
Test engineer

Reviewed by Joe Wang  
Joe Wang  
Test engineer

Approved by Leo Li  
Leo Li  
Laboratory director

## Shenzhen Anbotek Compliance Laboratory Limited

Address: East of 4/F, Building A, Hourui No.3 Industrial Zone, Xixiang Street, Bao'an District, Shenzhen, Guangdong, China  
Tel:(86)755-26066061 Fax:(86)755-26066021 Email:service@anbotek.com

 Hotline  
400-003-0500  
www.anbotek.com

# Test Report

No. SZARR180323033-01

Date: Apr. 03, 2018

Page 2 of 33

## Test Method:

### A. Screening test by XRF spectroscopy

XRF screening limits in mg/kg for regulated elements according to IEC 62321-3-1:2013.

Element	Limit of IEC 62321-3-1:2013. Unit (mg/kg)		MDL	
	Polymers and metals	Composite material	Polymers	Other material
Pb	$BL \leq (700-3\sigma) < X < (1300+3\sigma)$ $\leq OL$	$BL \leq (500-3\sigma) < X < (1500+3\sigma)$ $\leq OL$	10 mg/kg	50 mg/kg
Cd	$BL \leq (70-3\sigma) < X < (130+3\sigma)$ $\leq OL$	$LOD \leq (50-3\sigma) < X < (150+3\sigma)$ $\leq OL$	10 mg/kg	50 mg/kg
Hg	$BL \leq (700-3\sigma) < X < (1300+3\sigma)$ $\leq OL$	$BL \leq (500-3\sigma) < X < (1500+3\sigma)$ $\leq OL$	10 mg/kg	50 mg/kg
Cr	$BL \leq (700-3\sigma) < X$	$BL \leq (500-3\sigma) < X$	10 mg/kg	50 mg/kg
Br	$BL \leq (300-3\sigma) < X$	$BL \leq (250-3\sigma) < X$	10 mg/kg	50 mg/kg

### Note:

- BL = Under the XRF screening limit
- OL = Further chemical test will be conducted while result is above the screening limit
- X= The symbol "X" marks the region where further investigation is necessary
- 3σ= The reproducibility of analytical instruments
- LOD= Detection limit

### B. Chemical Test

Test Item(s)	Test Method	Measured Equipment(s)	MDL	Limit
Lead (Pb)	IEC 62321-5:2013 Ed.1.0	ICP-OES	2 mg/kg	1000 mg/kg
Cadmium (Cd)	IEC 62321-5:2013 Ed.1.0	ICP-OES	2 mg/kg	100 mg/kg
Mercury (Hg)	IEC 62321-4:2013 Ed.1.0	ICP-OES	2 mg/kg	1000 mg/kg
Hexavalent Chromium Cr(VI)	IEC 62321-7-1:2015 Ed.1.0	UV-VIS	/	1000 mg/kg
	IEC 62321-7-2:2017 Ed.1.0	UV-VIS	2 mg/kg	1000 mg/kg
Polybrominated Biphenyls (PBBs)	IEC 62321-6:2015 Ed.1.0	GC-MS	5 mg/kg	1000 mg/kg
Polybrominated Diphenyl Ethers (PBDEs)	IEC 62321-6:2015 Ed.1.0	GC-MS	5 mg/kg	1000 mg/kg



# Test Report

No. SZARR180323033-01

Date: Apr. 03, 2018

Page 3 of 33

**Test Results:**

Sample No.	Sample Description	Tested Items	XRF Screening Test Unit (mg/kg)	Chemical Test Unit (mg/kg)	Conclusion
1	Black coating	Pb	BL	/	PASS
		Cd	BL	/	
		Hg	BL	/	
		Cr(Cr(VI) )	BL	/	
		Br(PBBs&PBDEs)	BL	/	
2	Silvery metal decorating plate	Pb	BL	/	PASS
		Cd	BL	/	
		Hg	BL	/	
		Cr(Cr(VI) )	BL	/	
		Br(PBBs&PBDEs)	/	/	
3	Silvery metal screw	Pb	BL	/	PASS
		Cd	BL	/	
		Hg	BL	/	
		Cr(Cr(VI) )	X	Negative	
		Br(PBBs&PBDEs)	/	/	
4	Silvery metal fixed board	Pb	BL	/	PASS
		Cd	BL	/	
		Hg	BL	/	
		Cr(Cr(VI) )	BL	/	
		Br(PBBs&PBDEs)	/	/	
5	Silvery metal screw	Pb	BL	/	PASS
		Cd	BL	/	
		Hg	BL	/	
		Cr(Cr(VI) )	X	Negative	
		Br(PBBs&PBDEs)	/	/	
6	Silvery metal spring	Pb	BL	/	PASS
		Cd	BL	/	
		Hg	BL	/	
		Cr(Cr(VI) )	BL	/	
		Br(PBBs&PBDEs)	/	/	

# Test Report

No. SZARR180323033-01

Date: Apr. 03, 2018

Page 4 of 33

Sample No.	Sample Description	Tested Items	XRF Screening Test Unit (mg/kg)	Chemical Test Unit (mg/kg)	Conclusion
7	Gray plastic clamp ring	Pb	BL	/	PASS
		Cd	BL	/	
		Hg	BL	/	
		Cr(Cr(VI) )	BL	/	
		Br(PBBs&PBDEs)	BL	/	
8	Black plastic washer	Pb	BL	/	PASS
		Cd	BL	/	
		Hg	BL	/	
		Cr(Cr(VI) )	BL	/	
		Br(PBBs&PBDEs)	BL	/	
9	White plastic washer	Pb	BL	/	PASS
		Cd	BL	/	
		Hg	BL	/	
		Cr(Cr(VI) )	BL	/	
		Br(PBBs&PBDEs)	BL	/	
10	Silvery metal nut	Pb	OL	33750*	PASS
		Cd	BL	/	
		Hg	BL	/	
		Cr(Cr(VI) )	BL	/	
		Br(PBBs&PBDEs)	/	/	
11	Silvery metal screw	Pb	BL	/	PASS
		Cd	BL	/	
		Hg	BL	/	
		Cr(Cr(VI) )	X	Negative	
		Br(PBBs&PBDEs)	/	/	
12	Gray plastic spacer	Pb	BL	/	PASS
		Cd	BL	/	
		Hg	BL	/	
		Cr(Cr(VI) )	BL	/	
		Br(PBBs&PBDEs)	BL	/	

# Test Report

No. SZARR180323033-01

Date: Apr. 03, 2018

Page 5 of 33

Sample No.	Sample Description	Tested Items	XRF Screening Test Unit (mg/kg)	Chemical Test Unit (mg/kg)	Conclusion
13	White PCB	Pb	BL	/	PASS
		Cd	LOD	/	
		Hg	BL	/	
		Cr(Cr(VI) )	BL	/	
		Br(PBBs&PBDEs)	X	N.D.	
14	Chip LED	Pb	BL	/	PASS
		Cd	LOD	/	
		Hg	BL	/	
		Cr(Cr(VI) )	BL	/	
		Br(PBBs&PBDEs)	BL	/	
15	Silvery metal soldering tin	Pb	BL	/	PASS
		Cd	BL	/	
		Hg	BL	/	
		Cr(Cr(VI) )	BL	/	
		Br(PBBs&PBDEs)	/	/	
16	Silvery metal aluminum substrate	Pb	BL	/	PASS
		Cd	BL	/	
		Hg	BL	/	
		Cr(Cr(VI) )	BL	/	
		Br(PBBs&PBDEs)	/	/	
17	Transparent plastic lampshade	Pb	BL	/	PASS
		Cd	BL	/	
		Hg	BL	/	
		Cr(Cr(VI) )	BL	/	
		Br(PBBs&PBDEs)	BL	/	
18	Silvery metal substrate	Pb	BL	/	PASS
		Cd	BL	/	
		Hg	BL	/	
		Cr(Cr(VI) )	X	Negative	
		Br(PBBs&PBDEs)	/	/	



# Test Report

No. SZARR180323033-01

Date: Apr. 03, 2018

Page 6 of 33

Sample No.	Sample Description	Tested Items	XRF Screening Test Unit (mg/kg)	Chemical Test Unit (mg/kg)	Conclusion
19	White plastic washer	Pb	BL	/	PASS
		Cd	BL	/	
		Hg	BL	/	
		Cr(Cr(VI) )	BL	/	
		Br(PBBs&PBDEs)	BL	/	
20	Silvery metal screw	Pb	BL	/	PASS
		Cd	BL	/	
		Hg	BL	/	
		Cr(Cr(VI) )	X	Negative	
		Br(PBBs&PBDEs)	/	/	
21	Silvery metal screw	Pb	BL	/	PASS
		Cd	BL	/	
		Hg	BL	/	
		Cr(Cr(VI) )	X	Negative	
		Br(PBBs&PBDEs)	/	/	
22	Silvery metal binding post	Pb	BL	/	PASS
		Cd	BL	/	
		Hg	BL	/	
		Cr(Cr(VI) )	BL	/	
		Br(PBBs&PBDEs)	/	/	
23	White plastic wire holder	Pb	BL	/	PASS
		Cd	BL	/	
		Hg	BL	/	
		Cr(Cr(VI) )	BL	/	
		Br(PBBs&PBDEs)	BL	/	
24	Orange plastic switch	Pb	BL	/	PASS
		Cd	BL	/	
		Hg	BL	/	
		Cr(Cr(VI) )	BL	/	
		Br(PBBs&PBDEs)	BL	/	

# Test Report

No. SZARR180323033-01

Date: Apr. 03, 2018

Page 7 of 33

Sample No.	Sample Description	Tested Items	XRF Screening Test Unit (mg/kg)	Chemical Test Unit (mg/kg)	Conclusion
25	Gray plastic seat	Pb	BL	/	PASS
		Cd	BL	/	
		Hg	BL	/	
		Cr(Cr(VI) )	BL	/	
		Br(PBBs&PBDEs)	BL	/	
26	Silvery metal contact plate	Pb	BL	/	PASS
		Cd	BL	/	
		Hg	BL	/	
		Cr(Cr(VI) )	X	Negative	
		Br(PBBs&PBDEs)	/	/	
27	Silvery metal contact plate	Pb	BL	/	PASS
		Cd	BL	/	
		Hg	BL	/	
		Cr(Cr(VI) )	BL	/	
		Br(PBBs&PBDEs)	/	/	
28	Silvery metal screw	Pb	BL	/	PASS
		Cd	BL	/	
		Hg	BL	/	
		Cr(Cr(VI) )	BL	/	
		Br(PBBs&PBDEs)	/	/	
29	Black plastic jacket	Pb	BL	/	PASS
		Cd	BL	/	
		Hg	BL	/	
		Cr(Cr(VI) )	BL	/	
		Br(PBBs&PBDEs)	BL	/	
30	Red plastic jacket	Pb	BL	/	PASS
		Cd	BL	/	
		Hg	BL	/	
		Cr(Cr(VI) )	BL	/	
		Br(PBBs&PBDEs)	BL	/	

# Test Report

No. SZARR180323033-01

Date: Apr. 03, 2018

Page 8 of 33

Sample No.	Sample Description	Tested Items	XRF Screening Test Unit (mg/kg)	Chemical Test Unit (mg/kg)	Conclusion
31	Brown plastic jacket	Pb	BL	/	PASS
		Cd	BL	/	
		Hg	BL	/	
		Cr(Cr(VI) )	BL	/	
		Br(PBBs&PBDEs)	BL	/	
32	Yellow green plastic jacket	Pb	BL	/	PASS
		Cd	BL	/	
		Hg	BL	/	
		Cr(Cr(VI) )	BL	/	
		Br(PBBs&PBDEs)	BL	/	
33	Black plastic jacket	Pb	BL	/	PASS
		Cd	BL	/	
		Hg	BL	/	
		Cr(Cr(VI) )	BL	/	
		Br(PBBs&PBDEs)	BL	/	
34	Blue plastic jacket	Pb	BL	/	PASS
		Cd	BL	/	
		Hg	BL	/	
		Cr(Cr(VI) )	BL	/	
		Br(PBBs&PBDEs)	BL	/	
35	Coppery metal cable core	Pb	BL	/	PASS
		Cd	BL	/	
		Hg	BL	/	
		Cr(Cr(VI) )	BL	/	
		Br(PBBs&PBDEs)	/	/	
36	Silvery metal soldering tin	Pb	BL	/	PASS
		Cd	BL	/	
		Hg	BL	/	
		Cr(Cr(VI) )	BL	/	
		Br(PBBs&PBDEs)	/	/	



# Test Report

No. SZARR180323033-01

Date: Apr. 03, 2018

Page 9 of 33

Sample No.	Sample Description	Tested Items	XRF Screening Test Unit (mg/kg)	Chemical Test Unit (mg/kg)	Conclusion
37	Black plastic jacket	Pb	BL	/	PASS
		Cd	BL	/	
		Hg	BL	/	
		Cr(Cr(VI) )	BL	/	
		Br(PBBs&PBDEs)	BL	/	
38	White wire	Pb	BL	/	PASS
		Cd	BL	/	
		Hg	BL	/	
		Cr(Cr(VI) )	BL	/	
		Br(PBBs&PBDEs)	BL	/	
39	Black plastic jacket	Pb	BL	/	PASS
		Cd	BL	/	
		Hg	BL	/	
		Cr(Cr(VI) )	BL	/	
		Br(PBBs&PBDEs)	BL	/	
40	Green plastic jacket	Pb	BL	/	PASS
		Cd	BL	/	
		Hg	BL	/	
		Cr(Cr(VI) )	BL	/	
		Br(PBBs&PBDEs)	BL	/	
41	Coppery metal cable core	Pb	BL	/	PASS
		Cd	BL	/	
		Hg	BL	/	
		Cr(Cr(VI) )	BL	/	
		Br(PBBs&PBDEs)	/	/	
42	White plastic jacket	Pb	BL	/	PASS
		Cd	BL	/	
		Hg	BL	/	
		Cr(Cr(VI) )	BL	/	
		Br(PBBs&PBDEs)	BL	/	

# Test Report

No. SZARR180323033-01

Date: Apr. 03, 2018

Page 10 of 33

Sample No.	Sample Description	Tested Items	XRF Screening Test Unit (mg/kg)	Chemical Test Unit (mg/kg)	Conclusion
43	Silvery metal soldering tin	Pb	BL	/	PASS
		Cd	BL	/	
		Hg	BL	/	
		Cr(Cr(VI) )	BL	/	
		Br(PBBs&PBDEs)	/	/	
44	Black plastic jacket	Pb	BL	/	PASS
		Cd	BL	/	
		Hg	BL	/	
		Cr(Cr(VI) )	BL	/	
		Br(PBBs&PBDEs)	BL	/	
45	Red plastic jacket	Pb	BL	/	PASS
		Cd	BL	/	
		Hg	BL	/	
		Cr(Cr(VI) )	BL	/	
		Br(PBBs&PBDEs)	BL	/	
46	Blue plastic jacket	Pb	BL	/	PASS
		Cd	BL	/	
		Hg	BL	/	
		Cr(Cr(VI) )	BL	/	
		Br(PBBs&PBDEs)	BL	/	
47	Black plastic jacket	Pb	BL	/	PASS
		Cd	BL	/	
		Hg	BL	/	
		Cr(Cr(VI) )	BL	/	
		Br(PBBs&PBDEs)	BL	/	
48	Black plastic jacket	Pb	BL	/	PASS
		Cd	BL	/	
		Hg	BL	/	
		Cr(Cr(VI) )	BL	/	
		Br(PBBs&PBDEs)	BL	/	

# Test Report

No. SZARR180323033-01

Date: Apr. 03, 2018

Page 11 of 33

Sample No.	Sample Description	Tested Items	XRF Screening Test Unit (mg/kg)	Chemical Test Unit (mg/kg)	Conclusion
49	Gray plastic jacket	Pb	BL	/	PASS
		Cd	BL	/	
		Hg	BL	/	
		Cr(Cr(VI) )	BL	/	
		Br(PBBs&PBDEs)	BL	/	
50	Silvery metal cable core	Pb	BL	/	PASS
		Cd	BL	/	
		Hg	BL	/	
		Cr(Cr(VI) )	BL	/	
		Br(PBBs&PBDEs)	/	/	
51	Blue plastic jacket	Pb	BL	/	PASS
		Cd	BL	/	
		Hg	BL	/	
		Cr(Cr(VI) )	BL	/	
		Br(PBBs&PBDEs)	BL	/	
52	Silvery metal screw	Pb	BL	/	PASS
		Cd	BL	/	
		Hg	BL	/	
		Cr(Cr(VI) )	X	Negative	
		Br(PBBs&PBDEs)	/	/	
53	Silvery metal washer	Pb	BL	/	PASS
		Cd	BL	/	
		Hg	BL	/	
		Cr(Cr(VI) )	X	Negative	
		Br(PBBs&PBDEs)	/	/	
54	Silvery metal screw	Pb	BL	/	PASS
		Cd	BL	/	
		Hg	BL	/	
		Cr(Cr(VI) )	X	Negative	
		Br(PBBs&PBDEs)	/	/	



# Test Report

No. SZARR180323033-01

Date: Apr. 03, 2018

Page 12 of 33

Sample No.	Sample Description	Tested Items	XRF Screening Test Unit (mg/kg)	Chemical Test Unit (mg/kg)	Conclusion
55	White plastic nut	Pb	BL	/	PASS
		Cd	BL	/	
		Hg	BL	/	
		Cr(Cr(VI) )	BL	/	
		Br(PBBs&PBDEs)	BL	/	
56	Silvery metal nut	Pb	BL	/	PASS
		Cd	BL	/	
		Hg	BL	/	
		Cr(Cr(VI) )	BL	/	
		Br(PBBs&PBDEs)	/	/	
57	Black plastic washer	Pb	BL	/	PASS
		Cd	BL	/	
		Hg	BL	/	
		Cr(Cr(VI) )	BL	/	
		Br(PBBs)	X	N.D.	
		Br(PBDEs)	X	575	
58	Black plastic spacer	Pb	BL	/	PASS
		Cd	BL	/	
		Hg	BL	/	
		Cr(Cr(VI) )	BL	/	
		Br(PBBs&PBDEs)	BL	/	
59	Label	Pb	BL	/	PASS
		Cd	BL	/	
		Hg	BL	/	
		Cr(Cr(VI) )	BL	/	
		Br(PBBs&PBDEs)	BL	/	
60	Silvery metal shell	Pb	BL	/	PASS
		Cd	BL	/	
		Hg	BL	/	
		Cr(Cr(VI) )	BL	/	
		Br(PBBs&PBDEs)	/	/	

# Test Report

No. SZARR180323033-01

Date: Apr. 03, 2018

Page 13 of 33

Sample No.	Sample Description	Tested Items	XRF Screening Test Unit (mg/kg)	Chemical Test Unit (mg/kg)	Conclusion
61	Black plastic spacer	Pb	BL	/	PASS
		Cd	BL	/	
		Hg	BL	/	
		Cr(Cr(VI) )	BL	/	
		Br(PBBs&PBDEs)	BL	/	
62	Silvery metal soldering tin	Pb	BL	/	PASS
		Cd	BL	/	
		Hg	BL	/	
		Cr(Cr(VI) )	BL	/	
		Br(PBBs&PBDEs)	/	/	
63	Green PCB	Pb	BL	/	PASS
		Cd	LOD	/	
		Hg	BL	/	
		Cr(Cr(VI) )	BL	/	
		Br(PBBs&PBDEs)	X	N.D.	
64	Chip capacitor	Pb	BL	/	PASS
		Cd	LOD	/	
		Hg	BL	/	
		Cr(Cr(VI) )	BL	/	
		Br(PBBs&PBDEs)	BL	/	
65	Gray plastic spacer	Pb	BL	/	PASS
		Cd	BL	/	
		Hg	BL	/	
		Cr(Cr(VI) )	BL	/	
		Br(PBBs&PBDEs)	X	N.D.	
66	Chip resistor	Pb	OL**	/	PASS
		Cd	LOD	/	
		Hg	BL	/	
		Cr(Cr(VI) )	X	N.D.	
		Br(PBBs&PBDEs)	BL	/	

# Test Report

No. SZARR180323033-01

Date: Apr. 03, 2018

Page 14 of 33

Sample No.	Sample Description	Tested Items	XRF Screening Test Unit (mg/kg)	Chemical Test Unit (mg/kg)	Conclusion
67	Chip audion	Pb	BL	/	PASS
		Cd	LOD	/	
		Hg	BL	/	
		Cr(Cr(VI) )	BL	/	
		Br(PBBs&PBDEs)	X	N.D.	
68	IC	Pb	BL	/	PASS
		Cd	LOD	/	
		Hg	BL	/	
		Cr(Cr(VI) )	BL	/	
		Br(PBBs&PBDEs)	BL	/	
69	Chip audion	Pb	BL	/	PASS
		Cd	LOD	/	
		Hg	BL	/	
		Cr(Cr(VI) )	BL	/	
		Br(PBBs&PBDEs)	X	N.D.	
70	Chip diode	Pb	BL	/	PASS
		Cd	LOD	/	
		Hg	BL	/	
		Cr(Cr(VI) )	BL	/	
		Br(PBBs&PBDEs)	X	N.D.	
71	Silvery metal pin	Pb	BL	/	PASS
		Cd	BL	/	
		Hg	BL	/	
		Cr(Cr(VI) )	BL	/	
		Br(PBBs&PBDEs)	/	/	
72	MOSFT body	Pb	BL	/	PASS
		Cd	BL	/	
		Hg	BL	/	
		Cr(Cr(VI) )	BL	/	
		Br(PBBs&PBDEs)	X	N.D.	



# Test Report

No. SZARR180323033-01

Date: Apr. 03, 2018

Page 15 of 33

Sample No.	Sample Description	Tested Items	XRF Screening Test Unit (mg/kg)	Chemical Test Unit (mg/kg)	Conclusion
73	Silvery metal cooling fin	Pb	BL	/	PASS
		Cd	BL	/	
		Hg	BL	/	
		Cr(Cr(VI) )	BL	/	
		Br(PBBs&PBDEs)	/	/	
74	Silvery metal screw	Pb	BL	/	PASS
		Cd	BL	/	
		Hg	BL	/	
		Cr(Cr(VI) )	BL	/	
		Br(PBBs&PBDEs)	/	/	
75	Silvery metal nut	Pb	BL	/	PASS
		Cd	BL	/	
		Hg	BL	/	
		Cr(Cr(VI) )	BL	/	
		Br(PBBs&PBDEs)	/	/	
76	Silvery metal cooling fin	Pb	BL	/	PASS
		Cd	BL	/	
		Hg	BL	/	
		Cr(Cr(VI) )	BL	/	
		Br(PBBs&PBDEs)	/	/	
77	Yellow plastic jacket	Pb	BL	/	PASS
		Cd	BL	/	
		Hg	BL	/	
		Cr(Cr(VI) )	BL	/	
		Br(PBBs&PBDEs)	BL	/	
78	Coppery metal coil	Pb	BL	/	PASS
		Cd	BL	/	
		Hg	BL	/	
		Cr(Cr(VI) )	BL	/	
		Br(PBBs&PBDEs)	/	/	

# Test Report

No. SZARR180323033-01

Date: Apr. 03, 2018

Page 16 of 33

Sample No.	Sample Description	Tested Items	XRF Screening Test Unit (mg/kg)	Chemical Test Unit (mg/kg)	Conclusion
79	Green magnet ring	Pb	BL	/	PASS
		Cd	BL	/	
		Hg	BL	/	
		Cr(Cr(VI) )	BL	/	
		Br(PBBs&PBDEs)	BL	/	
80	Black plastic holder	Pb	BL	/	PASS
		Cd	BL	/	
		Hg	BL	/	
		Cr(Cr(VI) )	BL	/	
		Br(PBBs&PBDEs)	X	N.D.	
81	Black magnet	Pb	BL	/	PASS
		Cd	BL	/	
		Hg	BL	/	
		Cr(Cr(VI) )	BL	/	
		Br(PBBs&PBDEs)	BL	/	
82	Coppery metal coil	Pb	BL	/	PASS
		Cd	BL	/	
		Hg	BL	/	
		Cr(Cr(VI) )	BL	/	
		Br(PBBs&PBDEs)	/	/	
83	Yellow plastic jacket	Pb	BL	/	PASS
		Cd	BL	/	
		Hg	BL	/	
		Cr(Cr(VI) )	BL	/	
		Br(PBBs&PBDEs)	BL	/	
84	Yellow gummed tape	Pb	BL	/	PASS
		Cd	BL	/	
		Hg	BL	/	
		Cr(Cr(VI) )	BL	/	
		Br(PBBs&PBDEs)	BL	/	

# Test Report

No. SZARR180323033-01

Date: Apr. 03, 2018

Page 17 of 33

Sample No.	Sample Description	Tested Items	XRF Screening Test Unit (mg/kg)	Chemical Test Unit (mg/kg)	Conclusion
85	White plastic drive tube	Pb	BL	/	PASS
		Cd	BL	/	
		Hg	BL	/	
		Cr(Cr(VI) )	BL	/	
		Br(PBBs&PBDEs)	BL	/	
86	Black plastic scarfskin	Pb	BL	/	PASS
		Cd	BL	/	
		Hg	BL	/	
		Cr(Cr(VI) )	BL	/	
		Br(PBBs&PBDEs)	BL	/	
87	Black plastic sealed plug	Pb	BL	/	PASS
		Cd	BL	/	
		Hg	BL	/	
		Cr(Cr(VI) )	BL	/	
		Br(PBBs&PBDEs)	BL	/	
88	Silvery metal pin	Pb	BL	/	PASS
		Cd	BL	/	
		Hg	BL	/	
		Cr(Cr(VI) )	BL	/	
		Br(PBBs&PBDEs)	/	/	
89	Silvery metal shell	Pb	BL	/	PASS
		Cd	BL	/	
		Hg	BL	/	
		Cr(Cr(VI) )	BL	/	
		Br(PBBs&PBDEs)	/	/	
90	Electrolytic paper	Pb	BL	/	PASS
		Cd	BL	/	
		Hg	BL	/	
		Cr(Cr(VI) )	BL	/	
		Br(PBBs&PBDEs)	BL	/	



# Test Report

No. SZARR180323033-01

Date: Apr. 03, 2018

Page 18 of 33

Sample No.	Sample Description	Tested Items	XRF Screening Test Unit (mg/kg)	Chemical Test Unit (mg/kg)	Conclusion
91	Positive plate	Pb	BL	/	PASS
		Cd	BL	/	
		Hg	BL	/	
		Cr(Cr(VI) )	BL	/	
		Br(PBBs&PBDEs)	/	/	
92	Cathode piece	Pb	BL	/	PASS
		Cd	BL	/	
		Hg	BL	/	
		Cr(Cr(VI) )	BL	/	
		Br(PBBs&PBDEs)	/	/	
93	Rectifier	Pb	BL	/	PASS
		Cd	LOD	/	
		Hg	BL	/	
		Cr(Cr(VI) )	BL	/	
		Br(PBBs&PBDEs)	X	N.D.	
94	Blue capacitor	Pb	BL	/	PASS
		Cd	LOD	/	
		Hg	BL	/	
		Cr(Cr(VI) )	BL	/	
		Br(PBBs&PBDEs)	BL	/	
95	Gray capacitor	Pb	BL	/	PASS
		Cd	LOD	/	
		Hg	BL	/	
		Cr(Cr(VI) )	BL	/	
		Br(PBBs&PBDEs)	BL	/	
96	Gray glue	Pb	BL	/	PASS
		Cd	BL	/	
		Hg	BL	/	
		Cr(Cr(VI) )	BL	/	
		Br(PBBs&PBDEs)	BL	/	

# Test Report

No. SZARR180323033-01

Date: Apr. 03, 2018

Page 19 of 33

Sample No.	Sample Description	Tested Items	XRF Screening Test Unit (mg/kg)	Chemical Test Unit (mg/kg)	Conclusion
97	Silvery metal pin	Pb	BL	/	PASS
		Cd	BL	/	
		Hg	BL	/	
		Cr(Cr(VI) )	BL	/	
		Br(PBBs&PBDEs)	/	/	
98	Resistor body	Pb	BL	/	PASS
		Cd	LOD	/	
		Hg	BL	/	
		Cr(Cr(VI) )	BL	/	
		Br(PBBs&PBDEs)	BL	/	
99	Green resistor	Pb	BL	/	PASS
		Cd	LOD	/	
		Hg	BL	/	
		Cr(Cr(VI) )	X	N.D.	
		Br(PBBs&PBDEs)	BL	/	
100	Yellow capacitor	Pb	BL	/	PASS
		Cd	LOD	/	
		Hg	BL	/	
		Cr(Cr(VI) )	BL	/	
		Br(PBBs&PBDEs)	X	N.D.	
101	Orange capacitor	Pb	BL	/	PASS
		Cd	LOD	/	
		Hg	BL	/	
		Cr(Cr(VI) )	BL	/	
		Br(PBBs&PBDEs)	BL	/	
102	IC	Pb	BL	/	PASS
		Cd	LOD	/	
		Hg	BL	/	
		Cr(Cr(VI) )	BL	/	
		Br(PBBs&PBDEs)	BL	/	

# Test Report

No. SZARR180323033-01

Date: Apr. 03, 2018

Page 20 of 33

Sample No.	Sample Description	Tested Items	XRF Screening Test Unit (mg/kg)	Chemical Test Unit (mg/kg)	Conclusion
103	MOSFT body	Pb	BL	/	PASS
		Cd	BL	/	
		Hg	BL	/	
		Cr(Cr(VI) )	BL	/	
		Br(PBBs&PBDEs)	X	N.D.	
104	IC	Pb	BL	/	PASS
		Cd	LOD	/	
		Hg	BL	/	
		Cr(Cr(VI) )	BL	/	
		Br(PBBs&PBDEs)	BL	/	
105	Brown plastic scarfskin	Pb	BL	/	PASS
		Cd	BL	/	
		Hg	BL	/	
		Cr(Cr(VI) )	BL	/	
		Br(PBBs&PBDEs)	BL	/	

**Note:**

-MDL = Method Detection Limit

-N.D. = Not Detected (<MDL)

-mg/kg = ppm = parts per million

-Negative = Absence of Cr(VI) , the detected Cr(VI) concentration in the boiling water extraction solution is less than 0.10ug/cm<sup>2</sup>.

-Positive = Presence of Cr(VI), the detected Cr(VI) concentration in the boiling water extraction solution is equal to or greater than 0.13ug/cm<sup>2</sup>.

-\* =According to the product specification provided from client, the submitted sample of specimen No.10 is copper alloy containing up to 4% Lead by weight which is exempted by RoHS regulatory (Directive 2011/65/EU of The European Parliament and of The Council of 8 June 2011).

-According to the product specification provided from client, it is possible the source of lead in specimen No.66 could be from the glass/ceramic material of that electronic component which is exempted by RoHS regulatory (Directive 2011/65/EU of The European Parliament and of The Council of 8 June 2011).

However, the numerical result of detected restricted substances in specimen No.66 cannot be related back to the concentration of the substances in the original homogeneous material.



# Test Report

No. SZARR180323033-01

Date: Apr. 03, 2018

Page 21 of 33

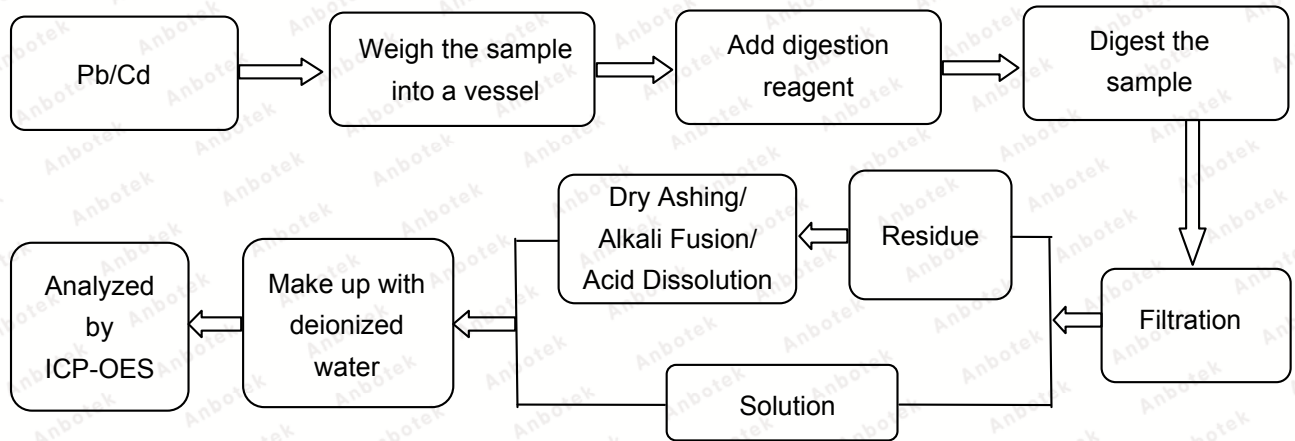
**Remark:**

- The screening results are only used for reference.
- When conducting the test for PBBs&PBDEs, XRF was introduced to screen Br Exclusively; When conducting the test for Hexavalent Chromium, XRF was introduced to screen Chromium exclusively.

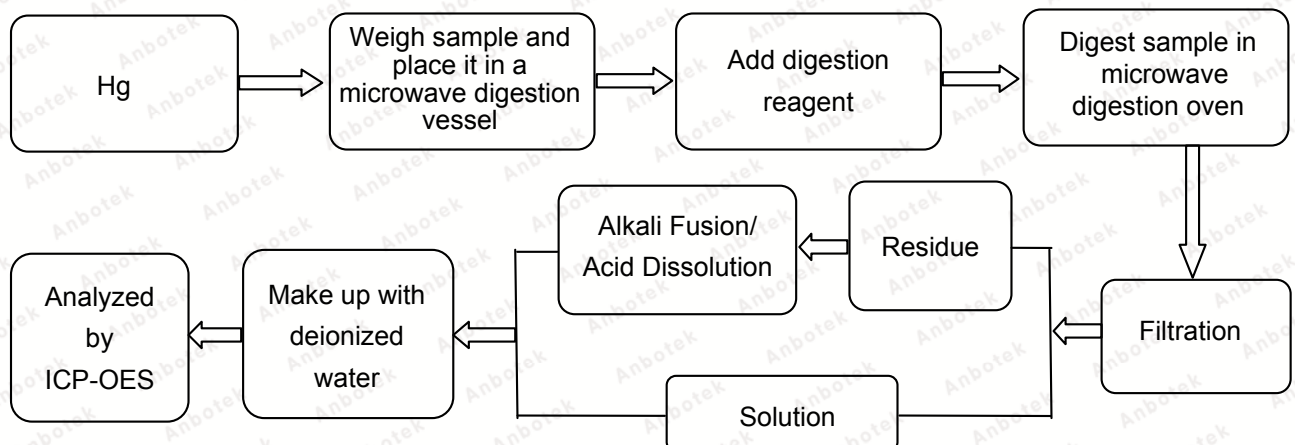
**Test Process:**

The sample(s) had been dissolved totally tested for Lead, Cadmium, Mercury.

◆ IEC 62321-5:2013 Ed.1.0



◆ IEC 62321-4:2013 Ed.1.0



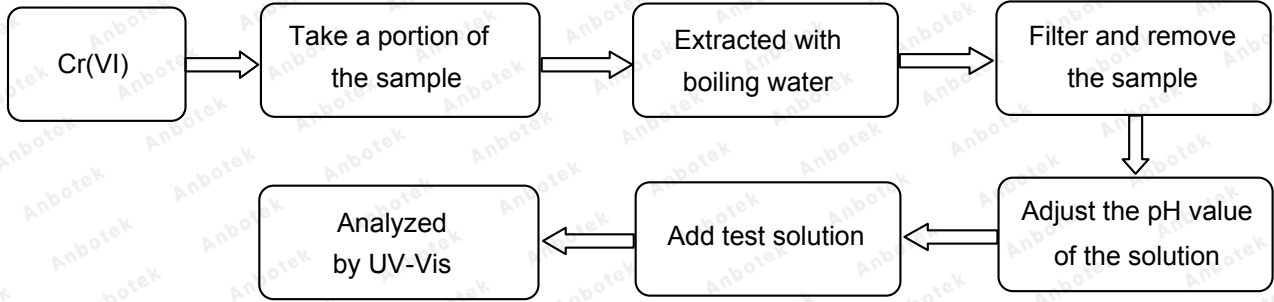
# Test Report

No. SZARR180323033-01

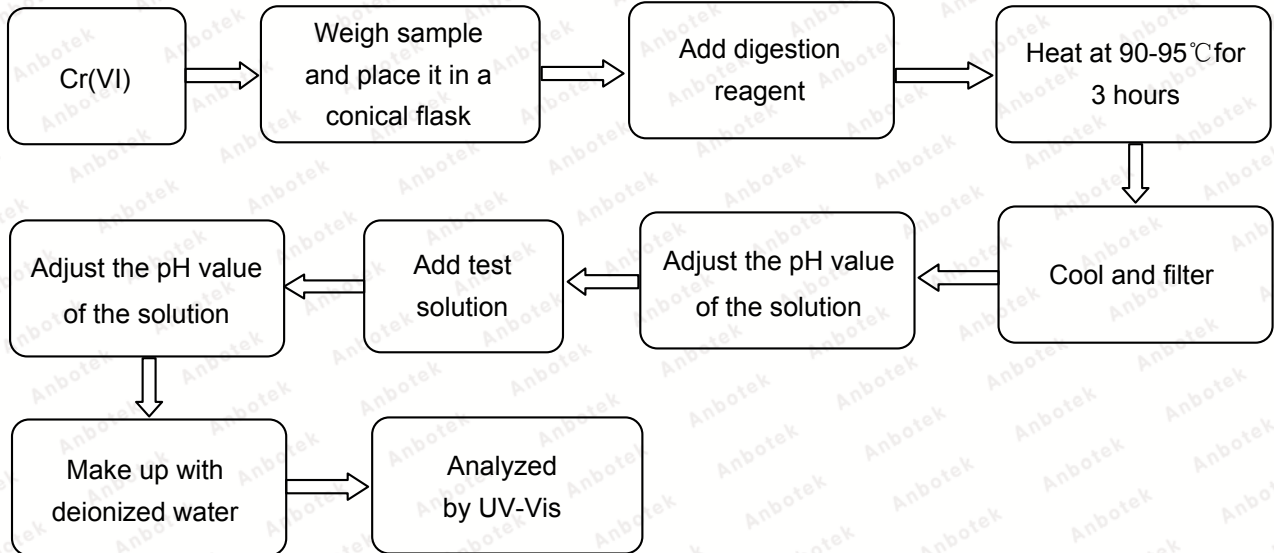
Date: Apr. 03, 2018

Page 22 of 33

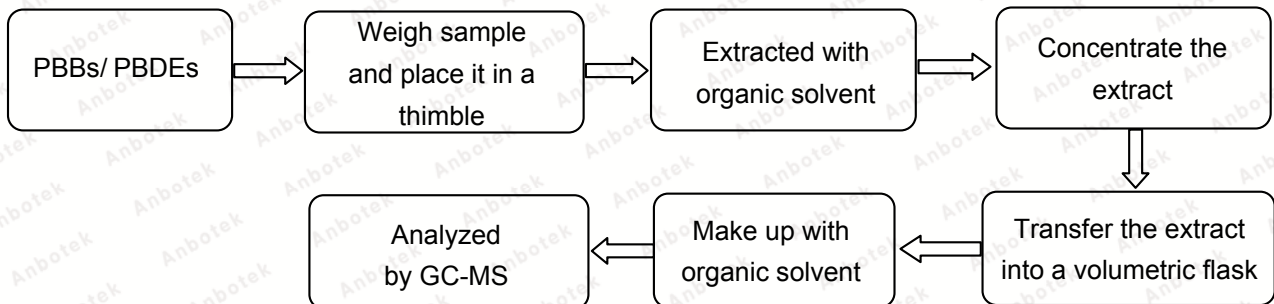
◆ IEC 62321-7-1:2015 Ed.1.0



◆ IEC 62321-7-2:2017 Ed.1.0



◆ IEC 62321-6:2015 Ed.1.0





# Test Report

No. SZARR180323033-01

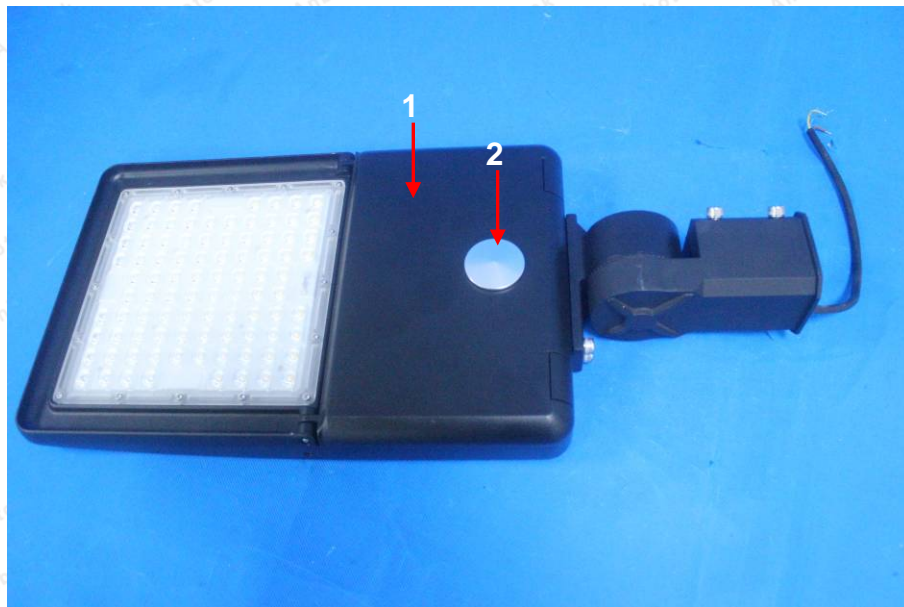
Date: Apr. 03, 2018

Page 23 of 33

## Photograph of Sample



Photo(s) of the tested component(s)



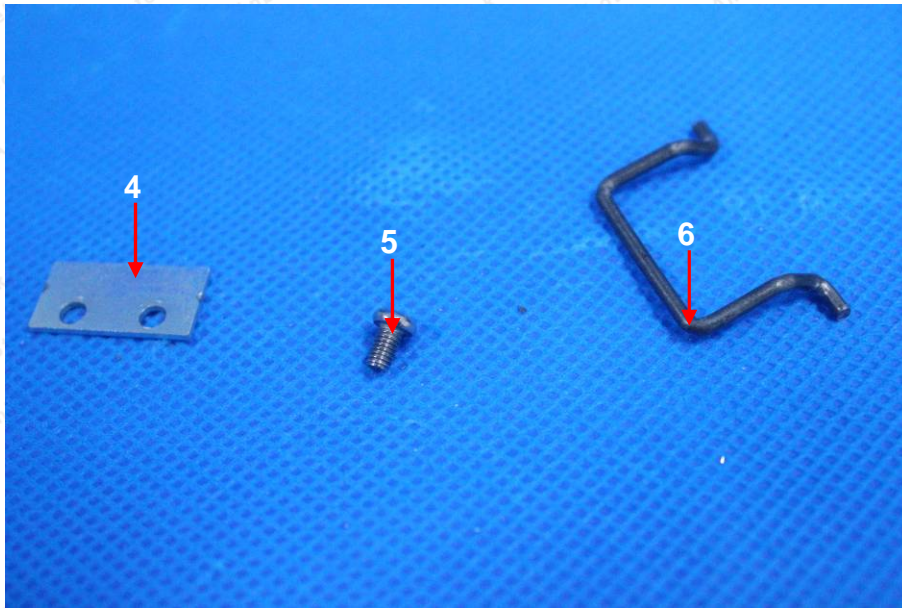


# Test Report

No. SZARR180323033-01

Date: Apr. 03, 2018

Page 24 of 33

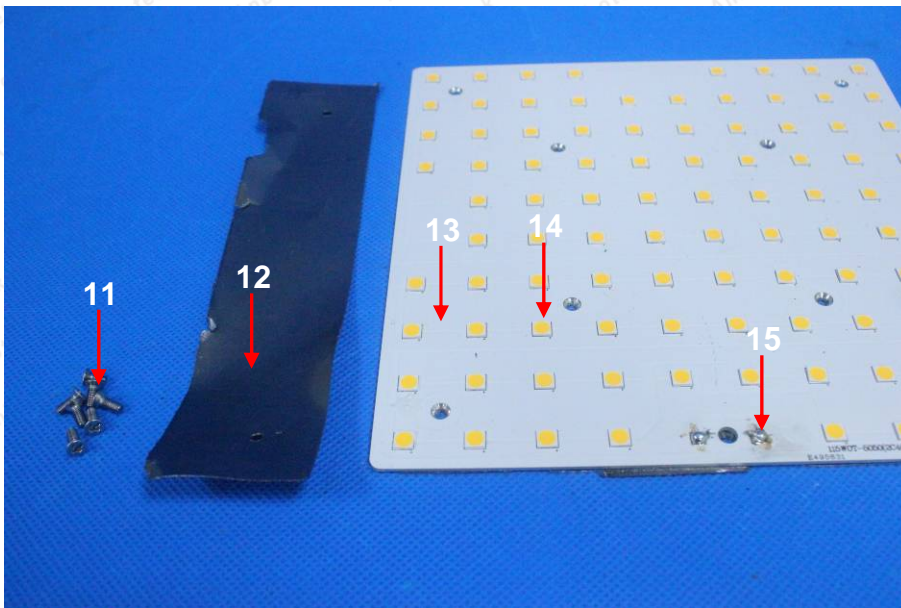
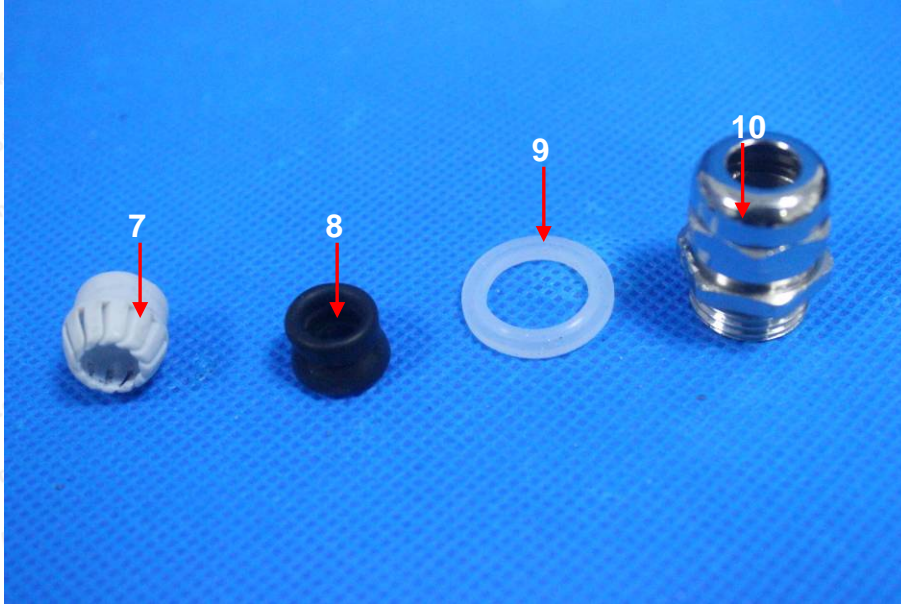


# Test Report

No. SZARR180323033-01

Date: Apr. 03, 2018

Page 25 of 33



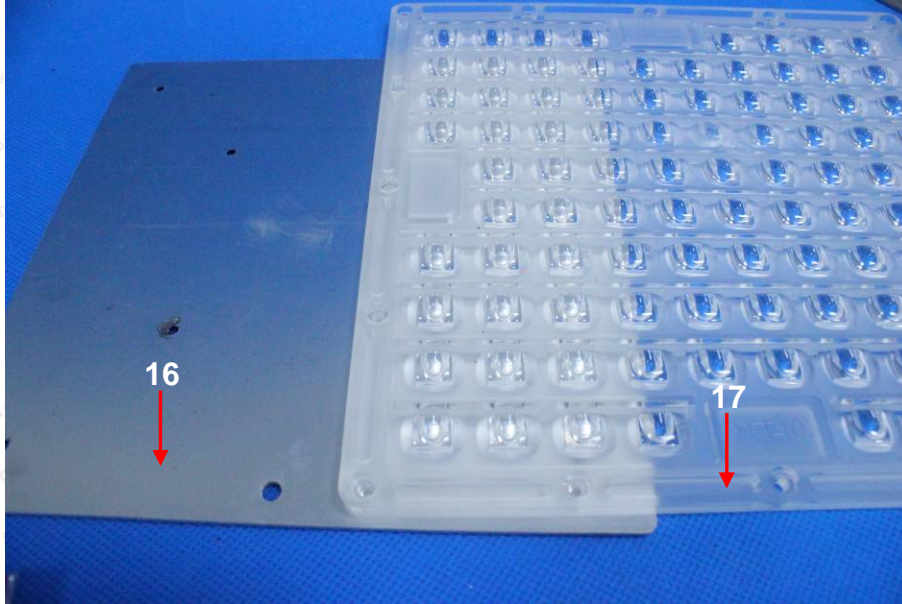


# Test Report

No. SZARR180323033-01

Date: Apr. 03, 2018

Page 26 of 33



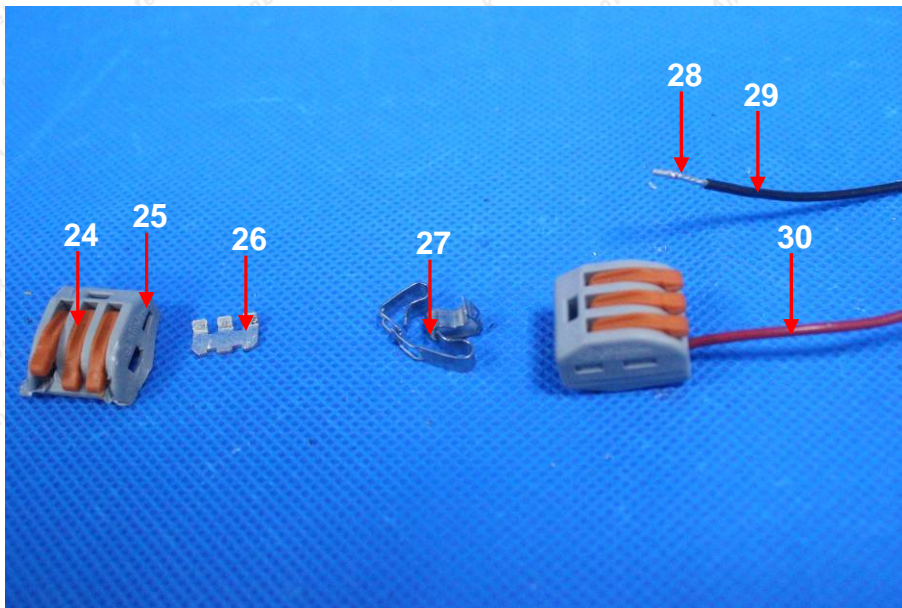
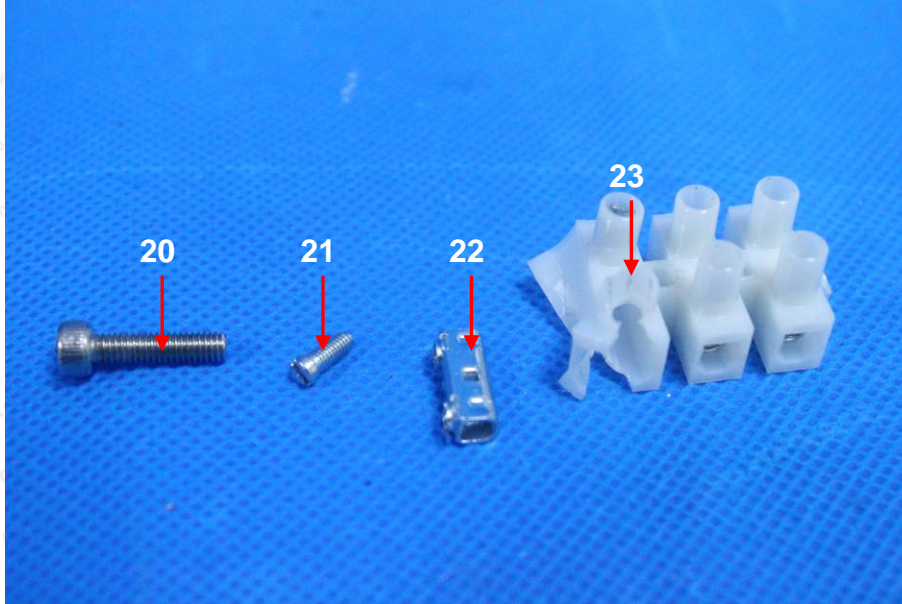


# Test Report

No. SZARR180323033-01

Date: Apr. 03, 2018

Page 27 of 33



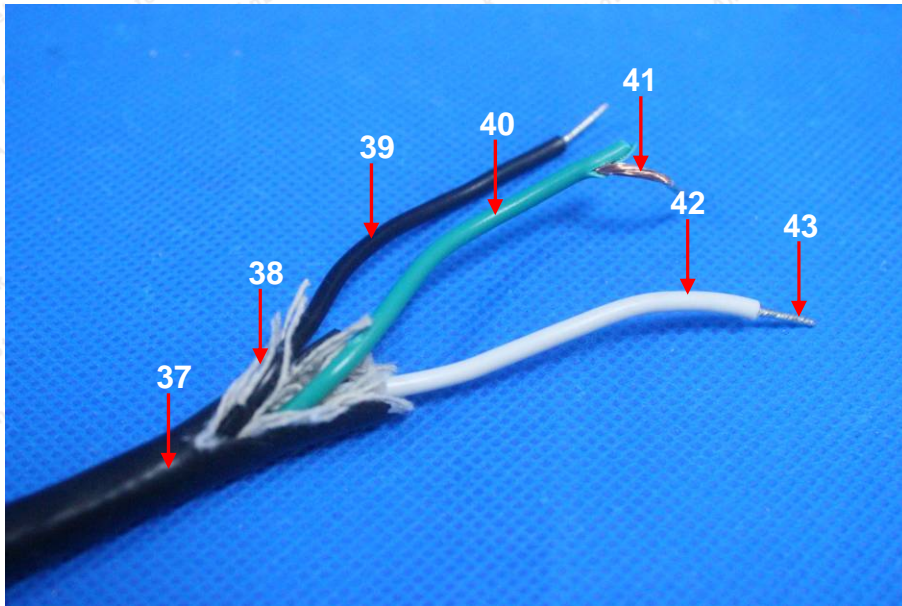
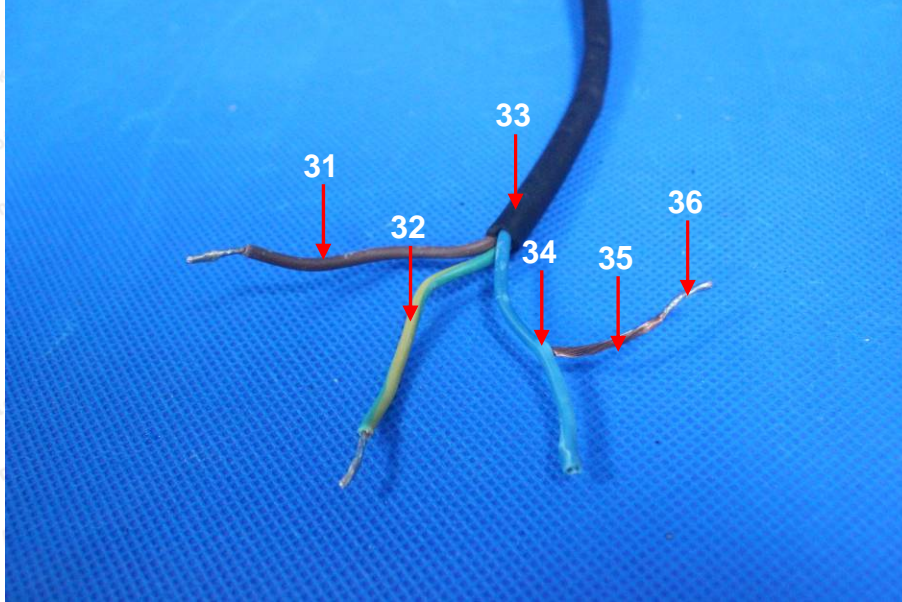


# Test Report

No. SZARR180323033-01

Date: Apr. 03, 2018

Page 28 of 33



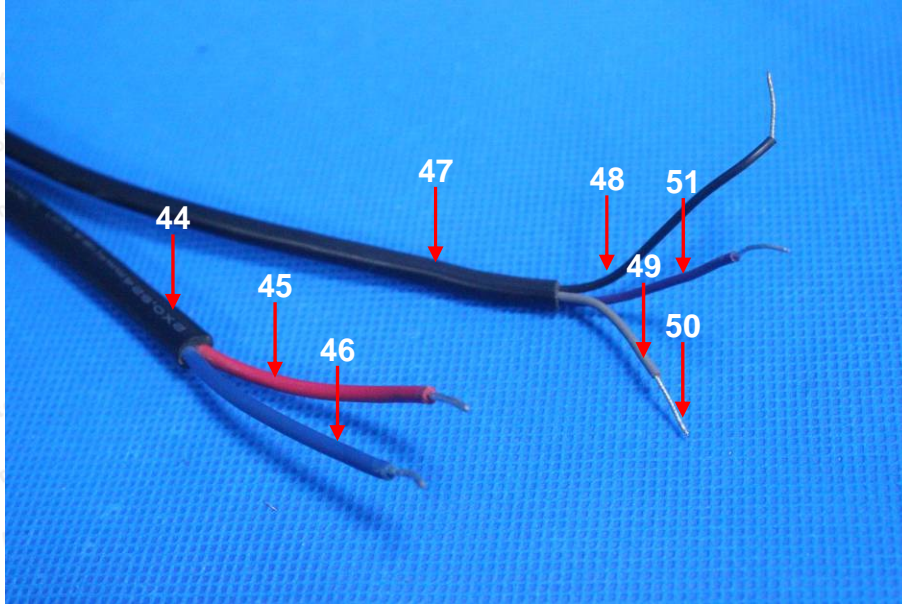


# Test Report

No. SZARR180323033-01

Date: Apr. 03, 2018

Page 29 of 33



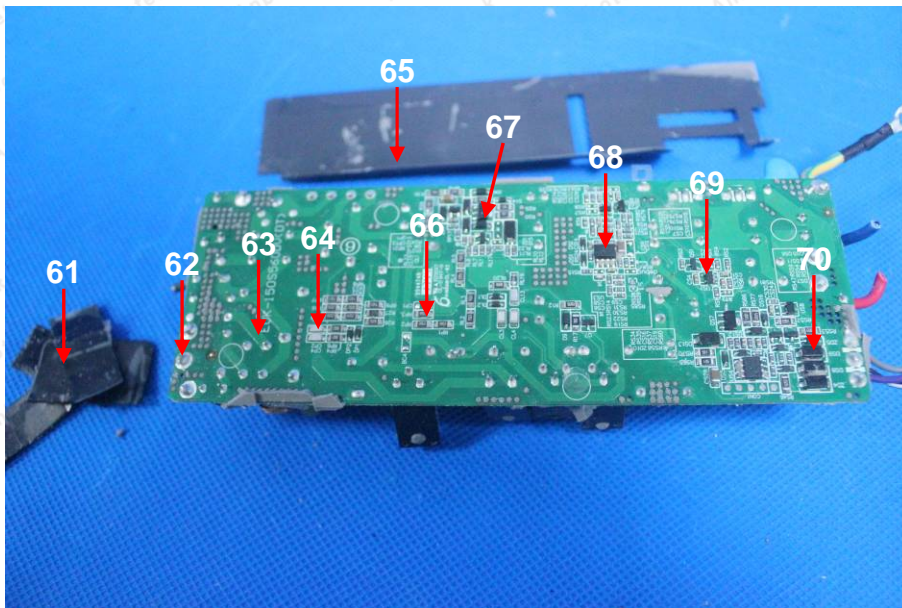
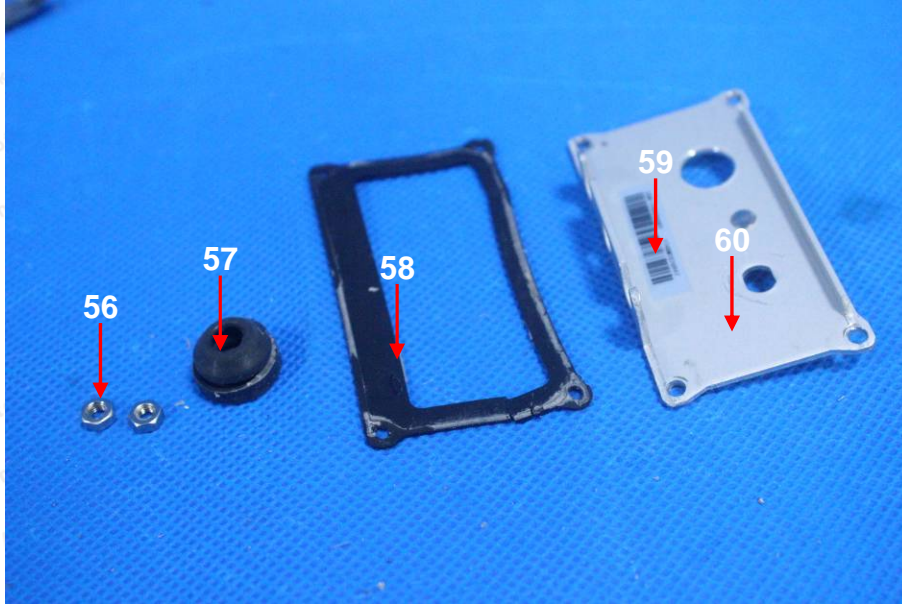


# Test Report

No. SZARR180323033-01

Date: Apr. 03, 2018

Page 30 of 33



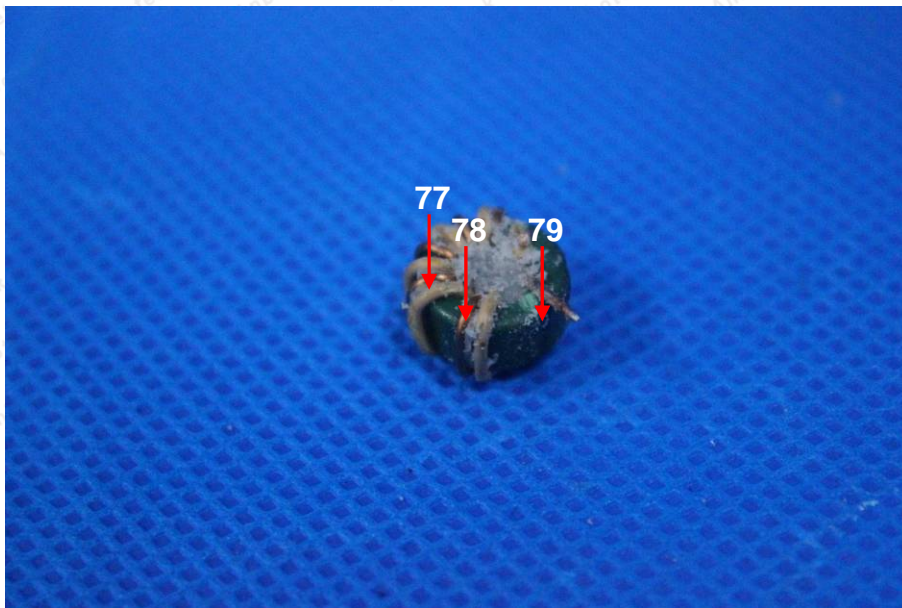
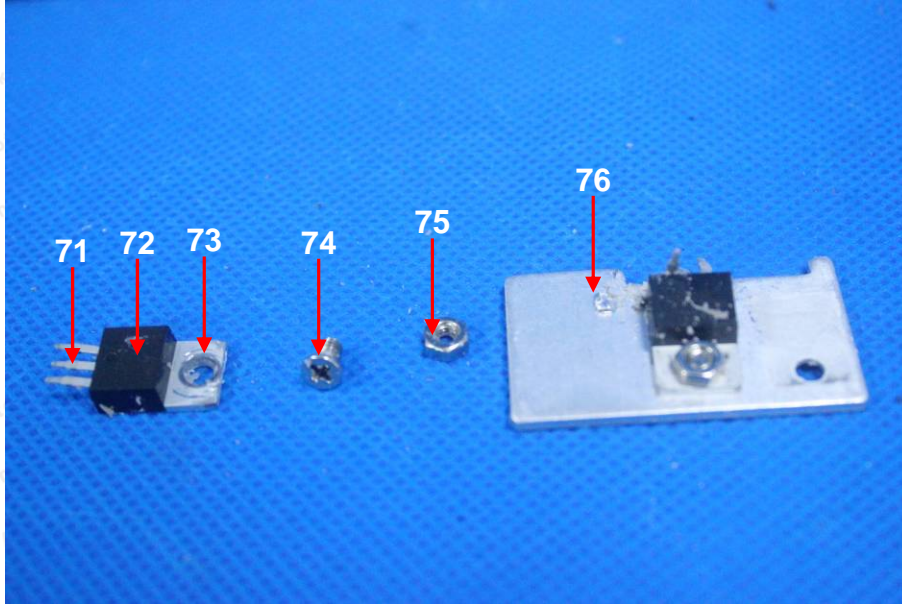


# Test Report

No. SZARR180323033-01

Date: Apr. 03, 2018

Page 31 of 33



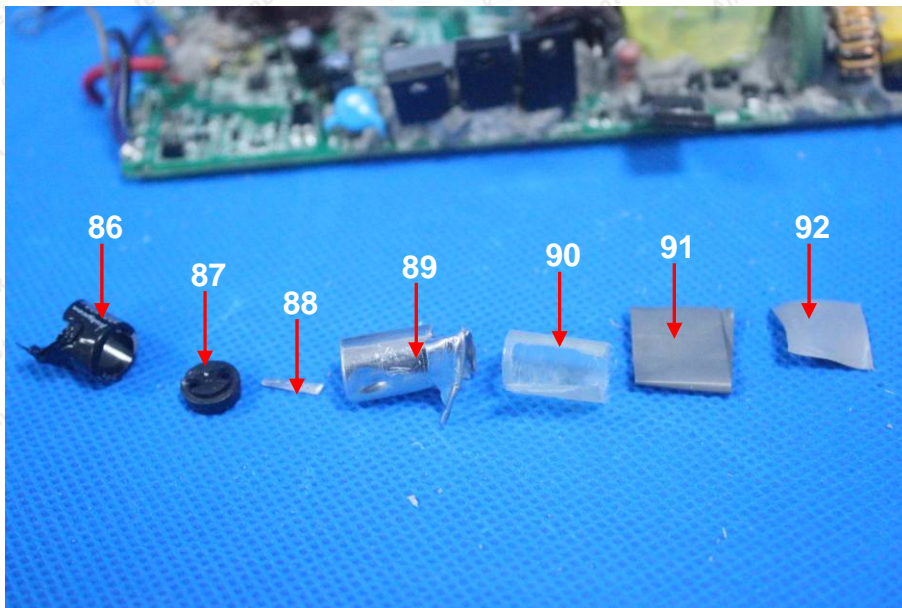
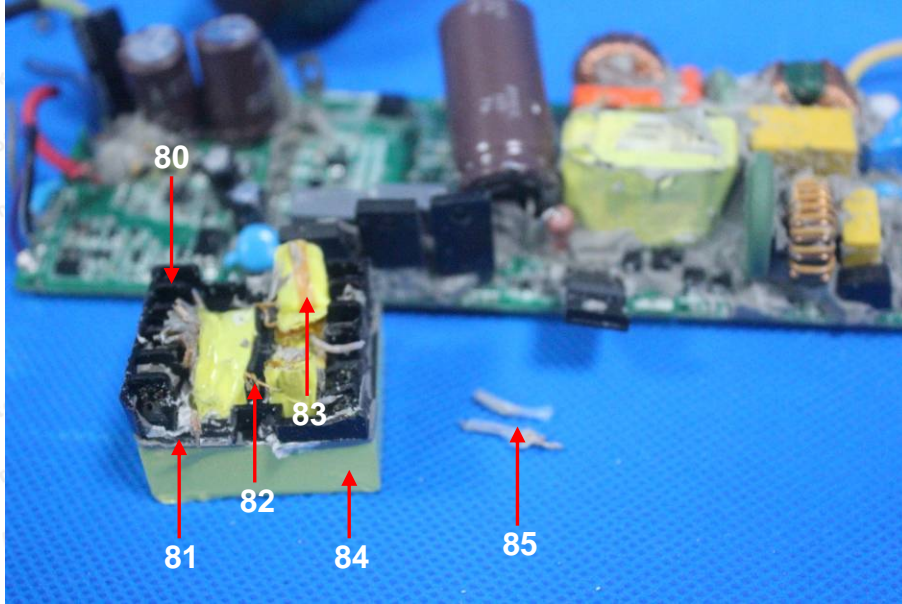


# Test Report

No. SZARR180323033-01

Date: Apr. 03, 2018

Page 32 of 33



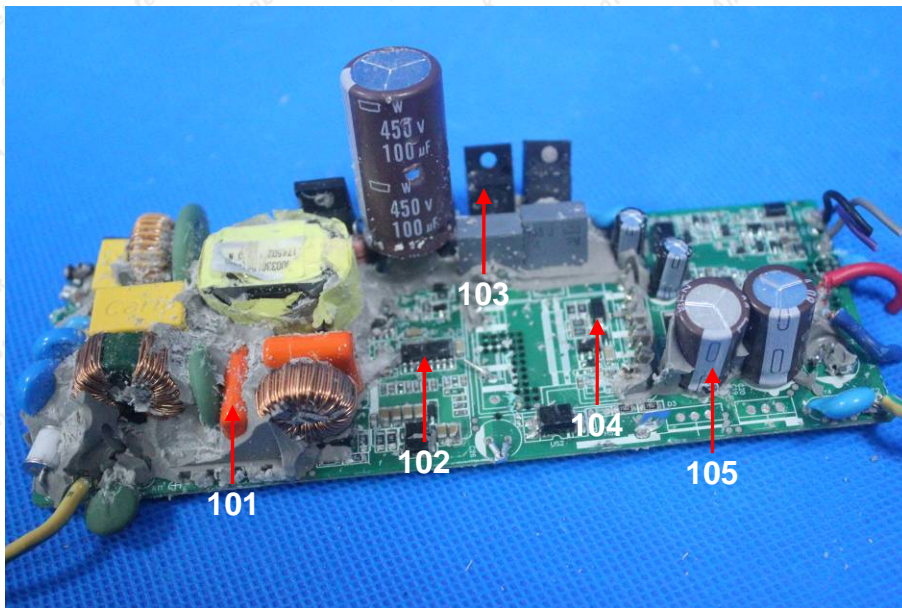
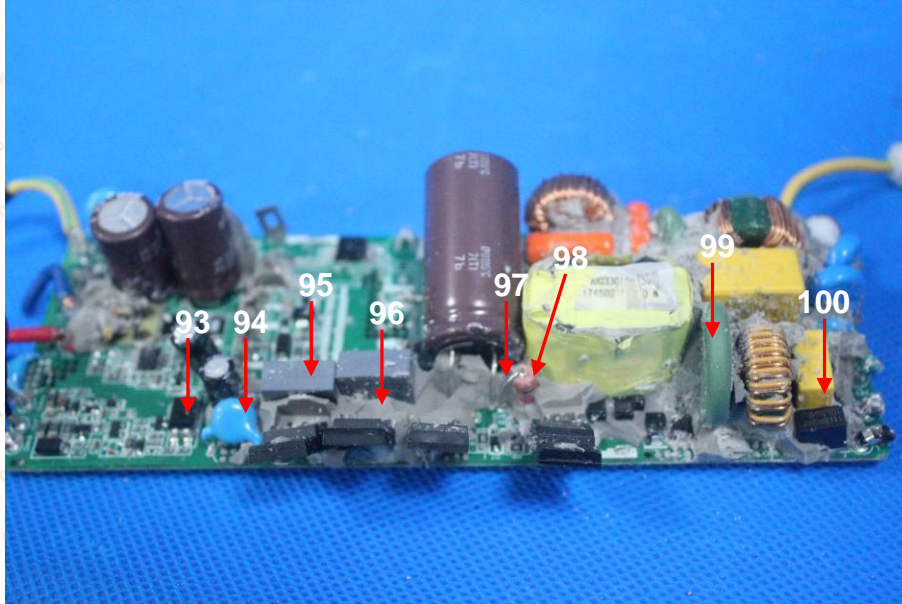


# Test Report

No. SZARR180323033-01

Date: Apr. 03, 2018

Page 33 of 33



\*\*\*\* End of Report \*\*\*\*

The test report is effective only with both signature and specialized stamp. The result(s) shown in this report refer only to the sample(s) tested. Without written approval of Anbotek, this report can't be reproduced except in full.